

Townhouse 2

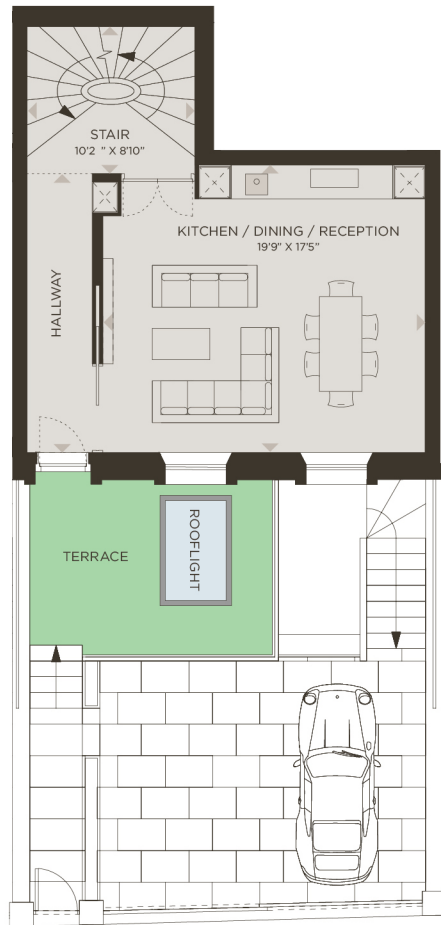
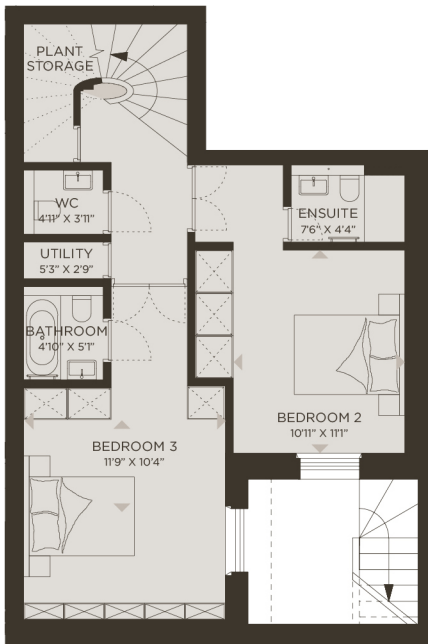
3 BEDROOM TOWNHOUSE

APPROX. AREA

1,763 SQ. FT. (163.8 SQ. M.)

LOWER GROUND FLOOR

GROUND FLOOR



N



MAX. CEILING HEIGHT

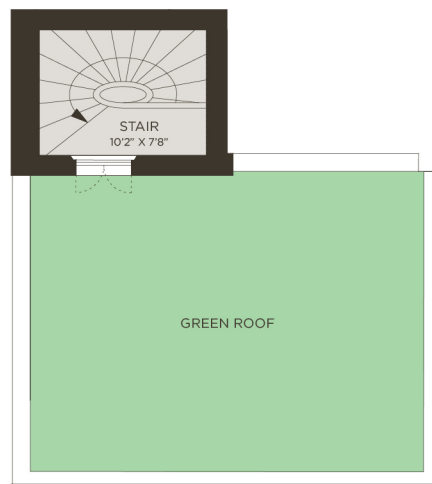
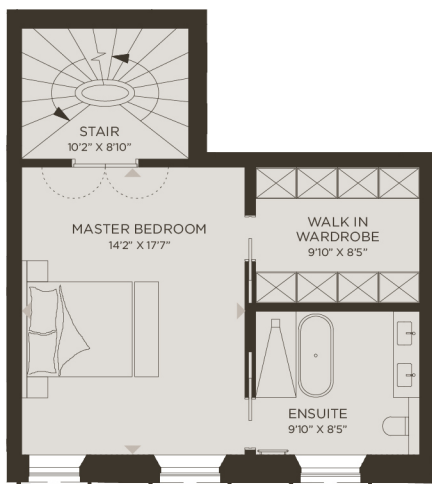
7'11" / 9'4" / 8'1" / 7'0"

(2.42 M. / 2.85 M / 2.47 M / 2.15 M.)

Townhouse 2

FIRST FLOOR

SECOND FLOOR



N



FORECOURT CARPARKING
TERRACE AREA
OUTSIDE SPACE