

Townhouse 3

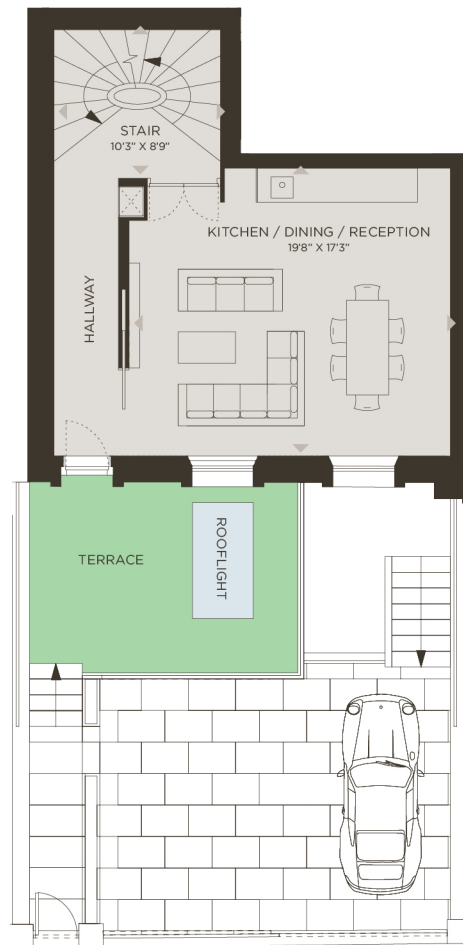
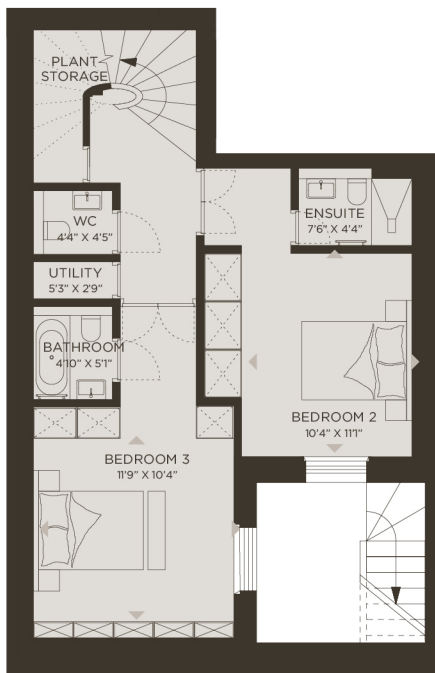
3 BEDROOM TOWNHOUSE

APPROX. AREA

1,773 SQ. FT. (164.7 SQ. M.)

LOWER GROUND FLOOR

GROUND FLOOR



N



MAX. CEILING HEIGHT

7'11" / 9'3" / 8'1" / 7'1"

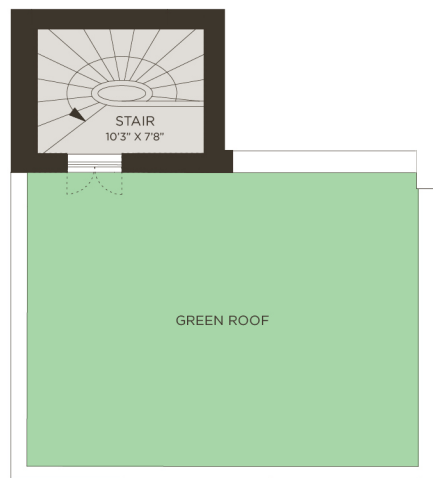
(2.42 M. / 2.83 M / 2.48 M / 2.17 M.)

Townhouse 3

FIRST FLOOR



SECOND FLOOR



N



FORECOURT CARPARKING
TERRACE AREA
OUTSIDE SPACE